



## Welcome to our School Development Special

We have had a busy start to term! Whilst you were away enjoying your Easter break, the builders from BEC were kept busy and works progressed well through the first few weeks. Externally the demolition to the end wall of the Music School has been completed with a temporary screen being installed. This will be where the access to the Music School will be from the atrium once the building works have been completed. The existing play surface and paving have been taken up (the paving will be reused) and the foundation trenches were dug to prepare for the pouring of the concrete. The old entrance ramp into the Music School has been demolished to allow the builders (and their yellow diggers) access to the site. The cedar soffit which formed the ceiling above the lockers has been removed and the padstones have been installed which will support the steelwork, which is currently being manufactured to very precise specifications. We had a very exciting day recently when a large red lorry came on site to pump vast amounts of concrete onto the building site which will form the floor of the new atrium. Year 5's maths lessons revolved around working out how much concrete would be needed to fill the space - what a great way to see maths in action! The scaffold has also started to be put up so we can begin to see how the building will take shape. Whilst we are waiting for more action on site why don't you take a trip through our history?

**2018: Reception boys visiting the site**



**2018: Music block**



**2018: Pouring concrete**

**2007**

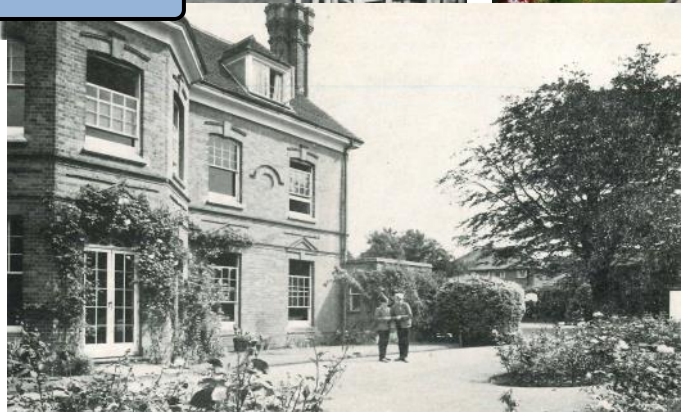


**2018: Trenches**

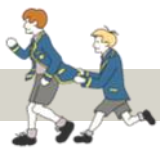
**c. 1960s**



**2018**







For the live School Calendar visit: [www.solefieldschool.org](http://www.solefieldschool.org)

### Building a Better Future for Our Boys

With the school entering its 70<sup>th</sup> Year, our ambitious development programme will help ensure that current and future pupils have the best possible educational facilities.

**First Phase** The first phase began during the Easter holidays, encompassing the area between the new Library/ICT Room and main building to provide a new event space. The initial phase is forecast to cost around £460,000 and is fully funded from the school's financial reserves and the Development Fund.

**Second Phase** A second phase, incorporating a new Science Block, Dining Hall and additional classrooms, is forecast to cost around £1,200,000 and will follow in due course. This is a substantial investment for a school of our size, so the second stage is likely to be funded from a combination of reserves, the Development Fund and secured debt.

**The Funds** The timing of phase two will depend on the progress of the Development Fund. We have already received more than £37,000 from generous parent donations and SPA have also agreed to focus their fundraising on the development. We would like to *encourage you* to support us in this endeavour; together we can build additional facilities for our boys' future learning.

**Every Little Bit Helps** Not everyone may be in a position to donate large sums of money but every bit helps and, collectively, we can make an enormous difference. For example, if each family donated £50 per month for the time their boys were at the school it would raise well over £500k with the benefit of Gift Aid. We have received enquiries from the families of Old Boys and have asked them if they would also like to contribute. Together we can all help to take Solefield forward into the next phase of its history.

**See for yourself** The scale model can be viewed in the Old Library – please have a look.

#### How you can Donate

Cheque made payable to 'Solefield School'

Direct payment to our bank: CAF Bank

Account Name: Solefield School Educational Trust

Ltd Account No: 00097061 Sort Code: 40-52-40

Gift Aid will greatly increase the total donation received by the school. Further information can be obtained from Mark Wrafter, our Governor for the Development Programme at [m.wrafter@solefieldschool.org](mailto:m.wrafter@solefieldschool.org).

Thank you for your continued support. *Dougal Philips & Rob Clewley*



Visit the Old Library to view our Development Model



**Progress Update** We will report on the success of our fundraising campaign on a regular basis. Mr Coston has been busy having set up time lapse

footage from his classroom. This will be available on our website shortly.

